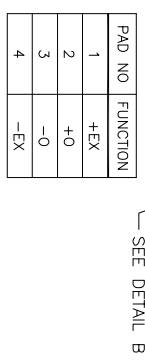
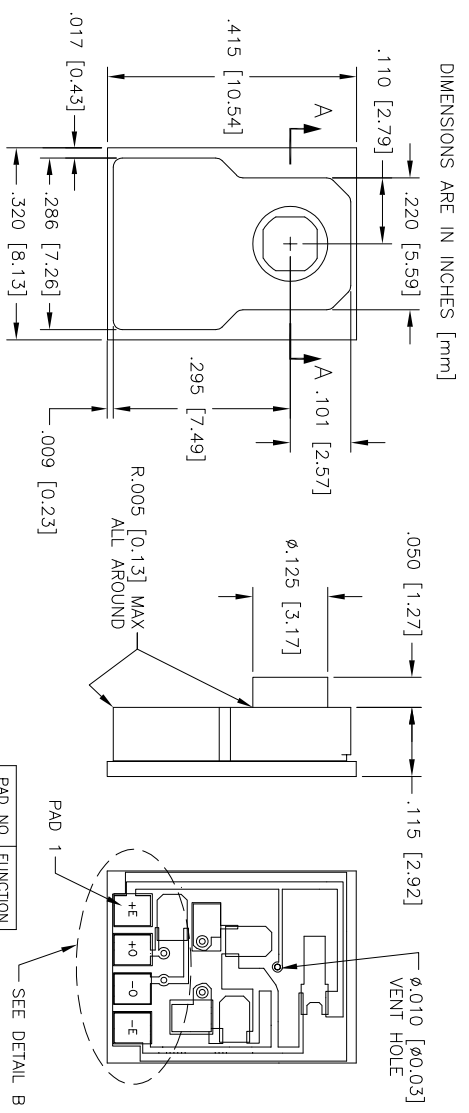
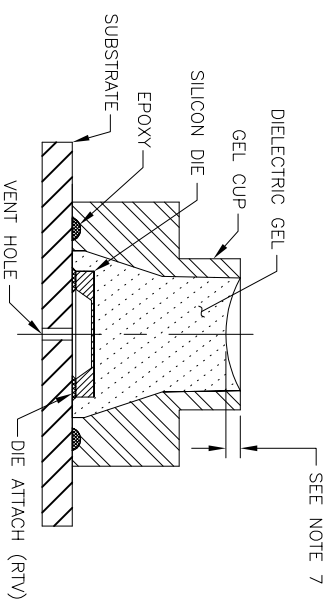


THIS DRAWING AND THE INFORMATION CONTAINED HEREIN IS THE PROPERTY OF SENSORALL AND SHALL NOT BE USED, REPRODUCED, PUBLISHED OR DISCLOSED TO OTHERS WITHOUT THE EXPRESS WRITTEN CONSENT OF SENSORALL

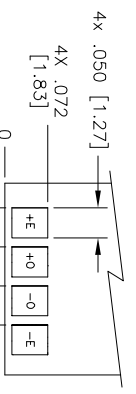
AMBIENT TEMPERATURE: 23°C (UNLESS OTHERWISE SPECIFIED)



PAD NO	FUNCTION
1	+EX
2	+0
3	-0
4	-EX



SECTION A-A
SCALE: 2:1



DETAIL B
SCALE: 1:1
PADS CONFIGURATION

PARAMETERS	MIN	TYP	MAX	UNITS	NOTES
OPERATING PRESSURE RANGE	-50	-	5171.5	mmHg	
OVERPRESSURE	150	-	-	PSI	
ZERO PRESSURE OFFSET	1	-	7	mmHg	
SENSITIVITY	-50 TO 300 mmHg	-	5.05	uV/V/mmHg	
	5.8 TO 30 PSI	-	4.9	uV/V/mmHg	
	30 TO 60 PSI	-	5.0	uV/V/mmHg	
60 TO 100 PSI	-	4.5	uV/V/mmHg		
LINEARITY & HYSTERESIS (-30 TO 100 mmHg)	-	-	1	mmHg	1
LINEARITY & HYSTERESIS (>100 TO 200 mmHg)	-	-	1	% OUTPUT	1
LINEARITY & HYSTERESIS (>200 mmHg)	-	-	1.5	% OUTPUT	1
INPUT IMPEDANCE	1k	-	3.2k	Ω	
OUTPUT IMPEDANCE	285	-	300	315	Ω
OUTPUT SYMMETRY	0.95	-	1.05	RATIO	2
SUPPLY VOLTAGE	2	-	6	10	VDC or VAC RMS
RISK CURRENT (@ 120 VAC RMS 60 Hz)	-	-	5	-	2
WARM-UP TIME	-	-	1200	-	SECONDS
FREQUENCY RESPONSE	-	-	2	-	Hz
OFFSET DRIFT	-	-	±0.1	mmHg	3
THERMAL SHIFT, SPAN (10°C TO 40°C)	-	-	±0.3	%/°C	4
THERMAL SHIFT, OFFSET (10°C TO 40°C)	-	-	±0.3	mmHg/°C	4
PHASE SHIFT (@ 5 KHz)	-	-	5	DEGREES	
LIGHT SENSITIVITY (3000 FOOT CANDLE)	-	-	1	mmHg	5
DEFIBRILLATOR WITHSTAND (400 JOULES)	5	-	-	DISCHARGES	5
STERILIZATION (EIO)	3	-	-	CYCLES	6
OPERATING TEMPERATURE RANGE	+10	-	+40	°C	
STORAGE TEMPERATURE RANGE	-25	-	+70	°C	
HUMIDITY (EXTERNAL)	10-90%	(NON-CONDENSING)			
OPERATING PRODUCT LIFE	168	HOURS			
SHELF LIFE	5	YEARS			
DIELECTRIC BREAKDOWN	10,000	VDC			
MEDIA INTERFACE	DIELECTRIC GEL				

APPROVAL

SIGNATURE (CUSTOMER) _____ PRINT NAME _____ DATE _____

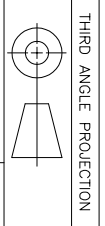
SIGNATURE (SENSORALL) _____ PRINT NAME _____ DATE _____

UNLESS OTHERWISE SPECIFIED, ALL DIMENSIONS ON THIS DRAWING ARE TO BE DIMENSIONS UNLESS OTHERWISE SPECIFIED. TOLERANCES ARE AS FOLLOWS:

FRACTIONS DECIMALS ANGLES

.XX ±.01 ±0.5

.XXX ±.005 ±0.3



TITLE

SENSORALL INTERNATIONAL

SAS5650-N SPEC DRAWING

PRODUCT PN	SAS5650-N
------------	-----------

MATERIAL:	N/A
-----------	-----

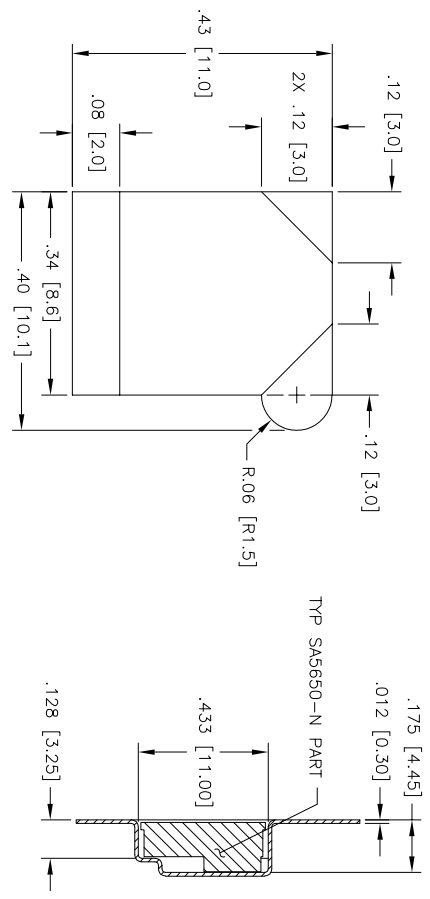
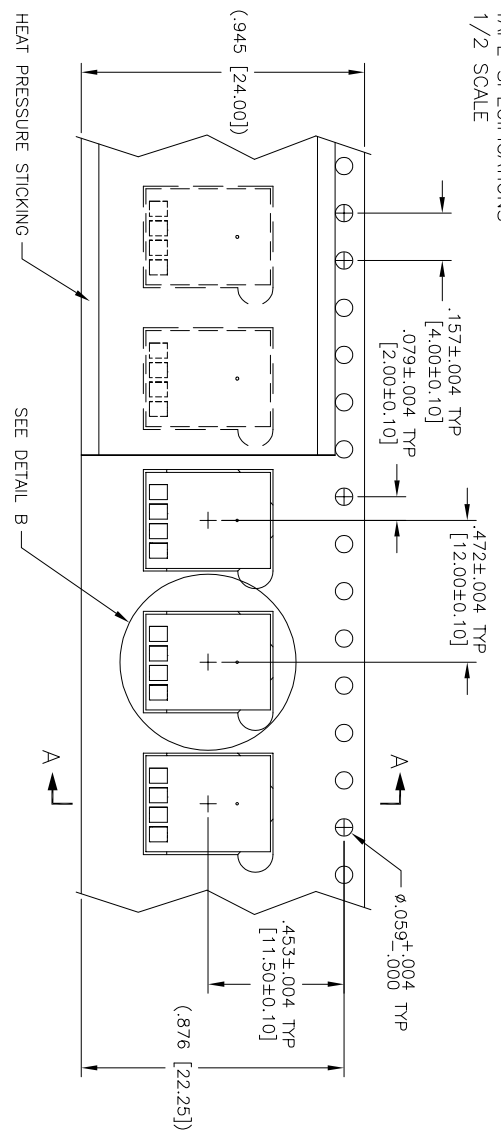
APPROVALS	DATE
DRAWN LZO	2023-8-18
CHECKED LZO	2023-8-18
APPROVED JY	2023-8-18

SIZE	UNIT	DWG NO	REV
A4	MM	SAS5650	A
SCALE	SHEET 1 OF 2		

THIS DRAWING AND THE INFORMATION CONTAINED HEREIN IS THE PROPERTY OF SENSORALL AND SHALL NOT BE USED, REPRODUCED, PUBLISHED OR DISCLOSED TO OTHERS WITHOUT THE EXPRESS WRITTEN CONSENT OF SENSORALL

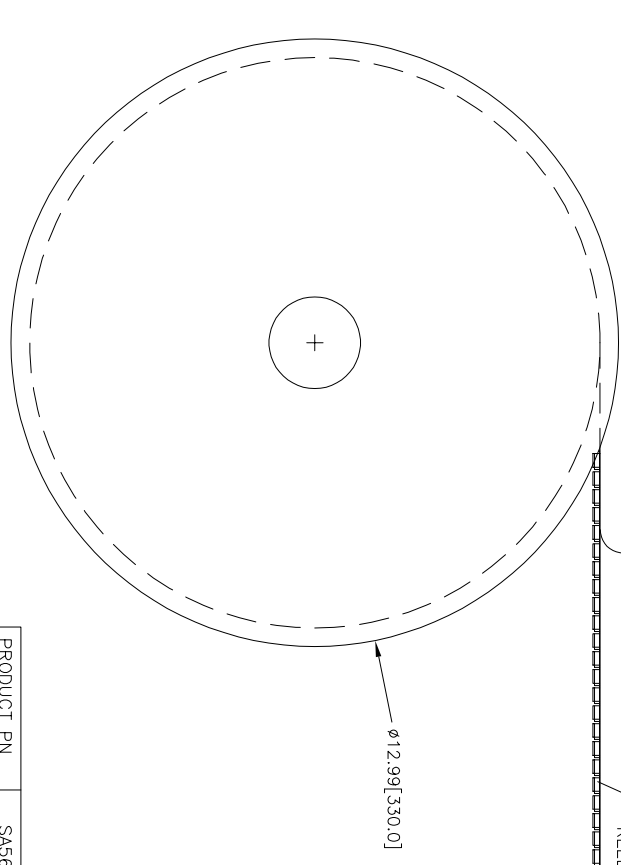
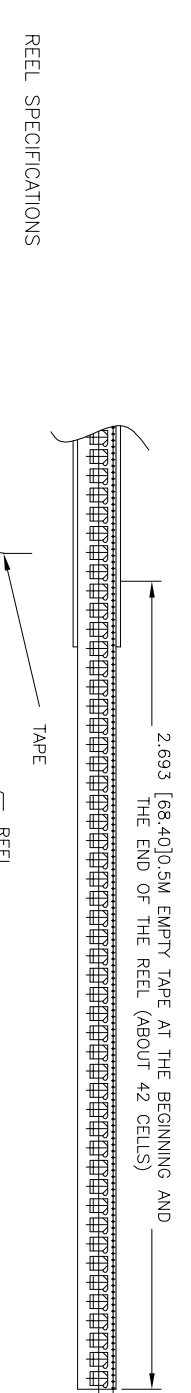
SHIPPING CONFIGURATION: TAPE AND REEL

TAPE SPECIFICATIONS
1/2 SCALE



SCALE: 4X
SHOWN WITHOUT PART FOR CLARITY

SECTION A-A
SCALE: 2X

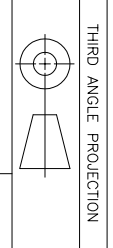


NOTES: UNLESS OTHERWISE SPECIFIED

- BEST FIT STRAIGHT LINE.
- DEFINED AS COMMON MODE SYMMETRY BETWEEN SIGNAL OUTPUT AND EITHER EXCITATION TERMINAL.
- OVER AN 8 HOUR TIME PERIOD AFTER A 10 MINUTE WARM-UP.
- OVER OPERATING TEMPERATURE RANGE (+10°C TO + 40°C).
- ONE DISCHARGE PER MINUTE PERFORMED BY CUSTOMER.
- STERILIZATION PERFORMED BY CUSTOMER.
- AFTER CURING, MENISCUS OF GEL SHALL BE FLUSH TO .035 [0.89] BELOW SURFACE.
- PACKING:
 - 1)THE PACKAGE CAN BE CUSTOMIZED FOR CARRIER AND TAPE.
 - 2)EACH REEL PACKED WITH MAX 1440 SENSORS. HAVE A DIFFERENT LOT NO.
 - 3)NO BLANK SPACES ON THE TAPE BETWEEN SENSORS.
 - 4)REELS PACKED IN CARTON BOXES. EACH BOX CONTAIN 6 REELS. PACKED IN 2 PE BAGS.

UNLESS OTHERWISE SPECIFIED, ALL DIMENSIONS ON THIS DRAWING ARE IN INCHES UNLESS OTHERWISE NOTED. DIMENSIONS IN PARENTHESES ARE IN MILLIMETERS. TOLERANCES ARE AS FOLLOWS:

FRACTIONS	DECIMALS	ANGLES
.XX	±.01	±0.5
.XXX	±.005	±0.3



THIRD ANGLE PROJECTION

SENSORALL INTERNATIONAL

TITLE: **SA5650-N SPEC DRAWING**

PRODUCT PN	SA5650-N	SCALE	A4	REV	A
CHECKED	LZO	DATE	2023-8-18	DWG NO	SA5650
APPROVED	JY	DATE	2023-8-18	SHEET	2 OF 2